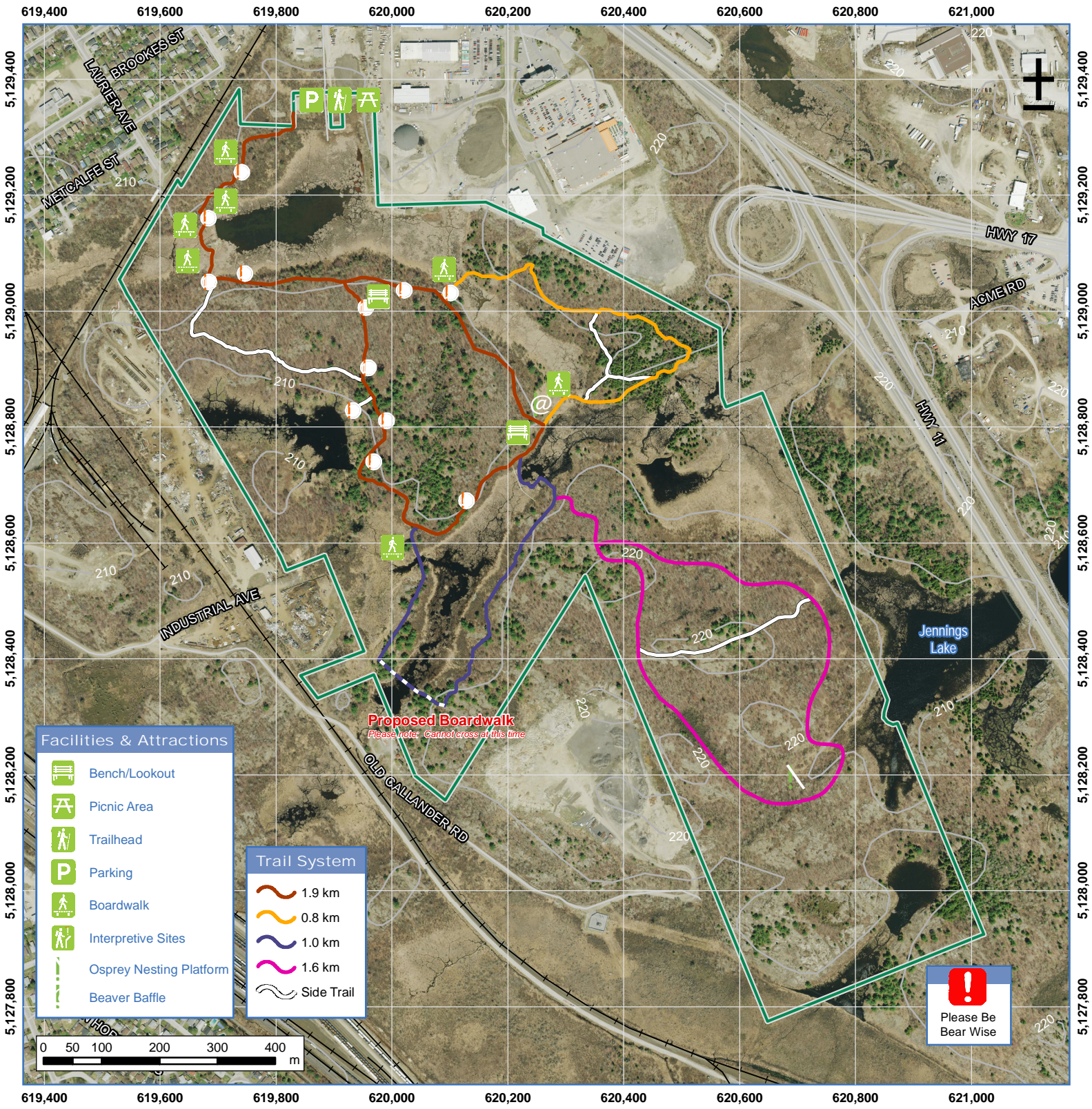
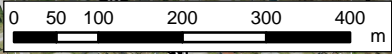


Laurier Woods Conservation Area



- Facilities & Attractions**
- Bench/lookout
 - Picnic Area
 - Trailhead
 - Parking
 - Boardwalk
 - Interpretive Sites
 - Osprey Nesting Platform
 - Beaver Baffle

- Trail System**
- 1.9 km
 - 0.8 km
 - 1.0 km
 - 1.6 km
 - Side Trail

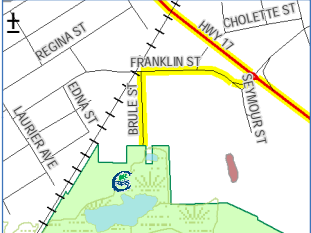


Please Be Bear Wise

LEGEND

- INTERPRETIVE SITE (For additional interpretive information please refer to brochure)
- PROPOSED BOARDWALK
- RAILWAY
- CONTOUR (10 m)
- CONSERVATION AREA BOUNDARY

Area: ~101 hectares (250 acres)



From Highway 11 exit onto Seymour Street. Turn right onto Franklin Street and then left onto Brule Street. Laurier Woods Conservation Area is at the end of the road on the right.

FRIENDS of Laurier Woods

NORTH BAY-MATTAWA CONSERVATION AUTHORITY
www.nbmc.ca

Produced by NBMCA January 2019. The NBMCA shall not be liable in any way for the use of, or reliance upon, this map or any information on this map. Areas and length of trails are approximate.

© Queen's Printer for Ontario and its licensors. [2019]. May Not be Reproduced without Permission.
THIS IS NOT A PLAN OF SURVEY

Coordinate System: NAD 1983 UTM Zone 17N